




Connect Your Wi-Fi Network

1. Go to Settings > Wi-Fi, and make sure Wi-Fi is turned on.
2. Tap the name of the Wi-Fi network you want to join.
3. Enter the password for the Wi-Fi network, then tap Join. If you can't tap Join, the password you've entered is incorrect.

After you join the network, you'll see ✓ next to the network and  in the upper-left side of your display or the upper-right corner.



Connect Your Kajeet Hotspot

1. Make sure the Kajeet SmartSpot is turned on.
2. With the display on, press the power/menu button once to enter the menu.
3. Press the power/menu button again to display the Wi-Fi name.
4. Press the power/menu button one more time to display the Wi-Fi password.



Connect to iBoss Content Filter

1. If you have never connected to iBoss
2. Open Safari and go to <http://lakenet-team.edutech.org/mobilelogin2.html>
3. Log-in with a Midlakes username and password.
4. Please be sure to pick Midlakes from the dropdown list of schools

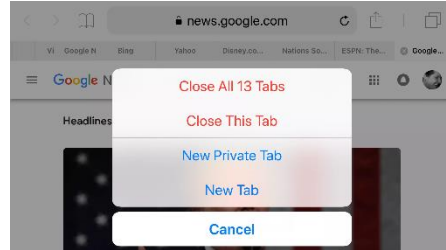
If you have connected to iBoss you can use the iBoss icon to make it easier to log into the filter in the future.





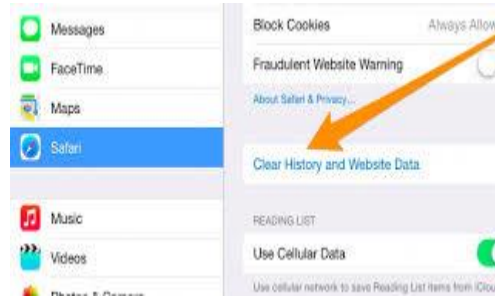
Close All Web Pages in Safari

1. Open Safari.
2. Long press on the "Tabs" icon denoted by two squares. On the iPad, it's at the top right of the screen.
3. Select Close All Tabs.

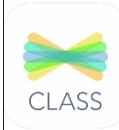


Clear All Safari Cache

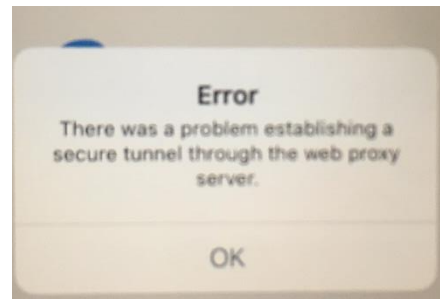
1. Launch the "Settings" app on your iPad through the home screen.
2. Scroll down the menu and select "Safari".
3. Scroll down to the bottom of right hand panel and tap on "Clear History and Website Data".
4. Confirm by tapping "Clear" from the pop-up window.



Seesaw



- Seesaw can be accessed by logging on to Clever and then opening the Seesaw app in the Clever Portal.
- A common problem with Seesaw is the secure tunnel error on the right.
- The fix is to be sure you have done the steps in both
Connect Your Wi-Fi Network
AND
Connect to iBoss Content Filter





Schoology

1. Open the Schoology App
2. From the top option, find your school or domain type in Phelps-Clifton and touch Phelps-Clifton Springs Central School District
3. You will see a sign-in like the one the right.
4. Enter your username (not email) then your password



Sign in to Schoology
All fields are required

Email or Username

Password

Phelps-Clifton Springs Central School District
Clifton Springs, NY

Clever

1. Many Apps are accessed via the Clever App.
2. Open the Clever App.
3. Your camera will become active so you can show your QR Code (badge) and it will log you in. If you do not have a badge you can choose to log in with Username and Password
4. Username is Firstname.lastname



i-Ready



1. To access i-Ready first log into Clever
2. From Clever find the i-Ready app and open it.



Microsoft Office 365

- Microsoft Office 365 includes many products that are available in the Self-Service App on your iPad.
- Open the app and use your Midlakes e-mail address (first.last@midlakes.org) to log in. If prompted for a Work or School Account or a Microsoft account choose the Work or School account option.
- Your password will be your normal Midlakes password.
- Office 365 is also available from any web browser. The address to the suite is <https://portal.office.com/> The sign in credentials are the same as above



- 1.